

EDDW

Airport information:

Country: Germany

City: BREMEN

Coordinates: N 53° 02.9', E008 47.2

Elevation: 14

Customs: Customs

Fuel: 100LL, Jet A1

RFF: CAT 8

hours: MON 0500-SAT 2230, SUN 0500-2230

Runways:

Runway 09

Takeoff length: 2034, Landing length: 2034

Runway 27

Takeoff length: 2034, Landing length: 2034

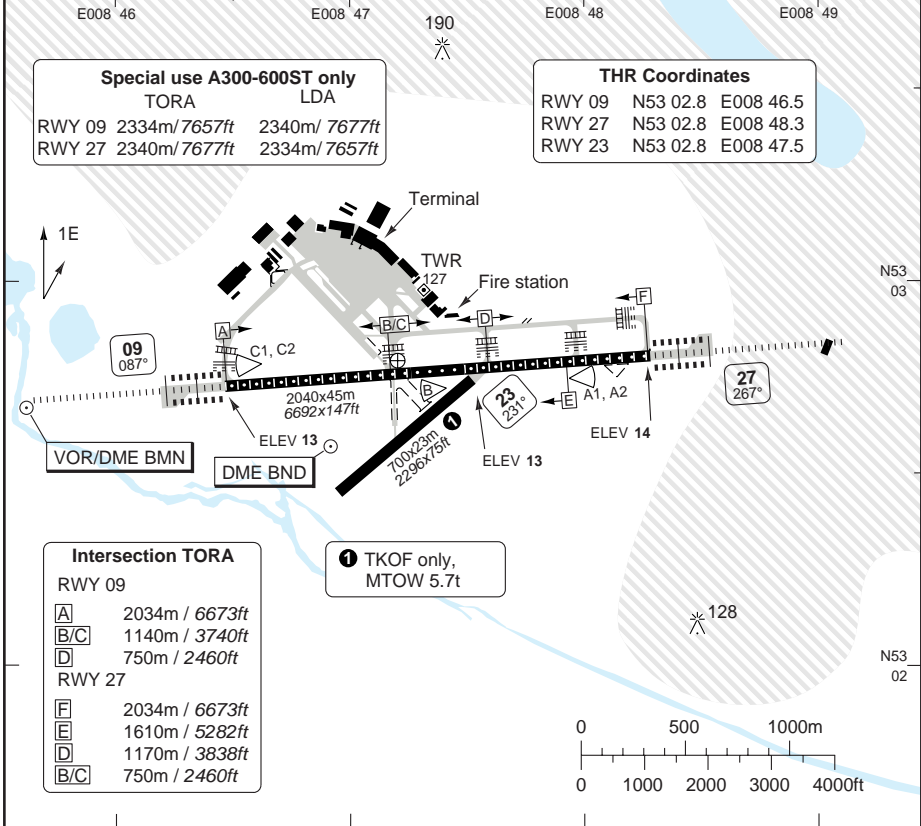
AERODROME

BREMEN

10 - 1

CLR Datalink only	Bremen GND 121.75	TWR 120.325 134.825	RAD 125.65 136.275	ATIS (D) 132.375
-------------------------	-----------------------------	---	--	----------------------------

AD Elev 14	ARP: N53 02.8 E008 47.2	RFF: CAT 8	AD HR: 0445 - 2300
------------	-------------------------	------------	--------------------



RWY	Slope	TORA m/ft	LDA m/ft	ALS	REDL	RCLL	Additional
09	0	2034 / 6673	2034 / 6673	H-B	H ②	15m	P 3° (51), REIL
27	0	2034 / 6673	2034 / 6673	H-B	H ②	15m	P 3° (51), REIL
23	-	700 / 2296	700 / 2296	-	-	-	-

② White.

EU OPS TAKE OFF MINIMA

RWY	Facilities	RVR			
		A B C	D		
09/27	HRCLL + HREDL + Multiple RVR + HUD	Ap.O	LVTO	75m	75m
	HRCLL + HREDL + Multiple RVR	Ap.O	LVTO	125m	150m
	RCLL + REDL + Multiple RVR		LVTO	150m	200m
	RCLL + REDL		LVTO	200m	250m
	RCL (day only) or RCL + REDL		LVTO	250m	300m
	RCL (day only) or RCL + REDL			400m	400m
All	NIL (day only)			500m	500m

© Navtech - eddw01aorg0

Change: AD HR, BMN, BND, Int TORA

THIS CHART IS A PART OF NAVIGRAPH NDAC AND IS INTENDED FOR FLIGHT SIMULATION USE ONLY

Germany - EDDW / BRE

BREMEN

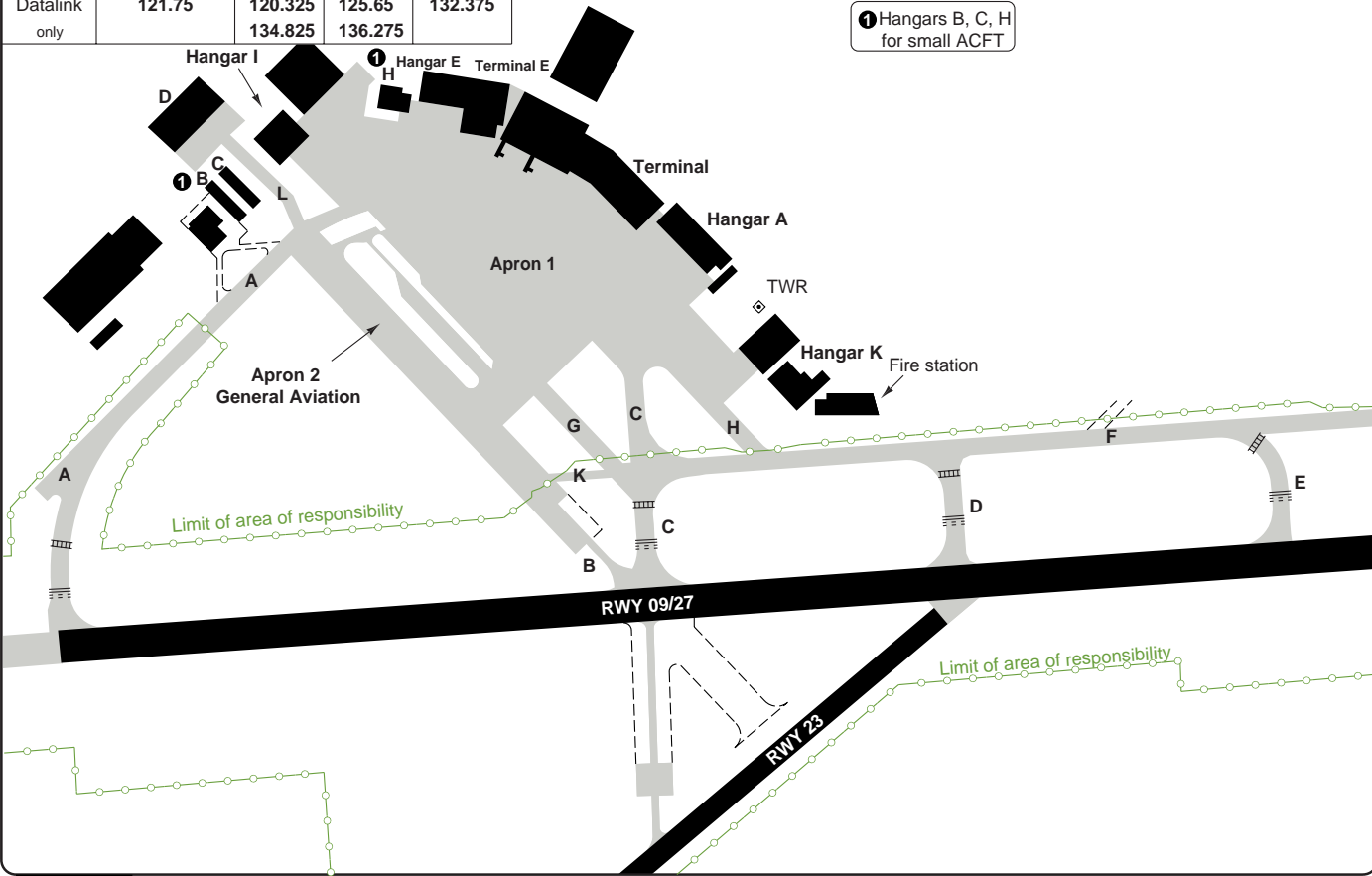
10 - 2 | 20 AUG 12

WEF 20 SEP 12

AERODROME

CLR Datalink only	Bremen GND 121.75	TWR 120.325 134.825	RAD 125.65 136.275	ATIS (D) 132.375
-------------------------	----------------------	---------------------------	--------------------------	---------------------

① Hangars B, C, H for small ACFT



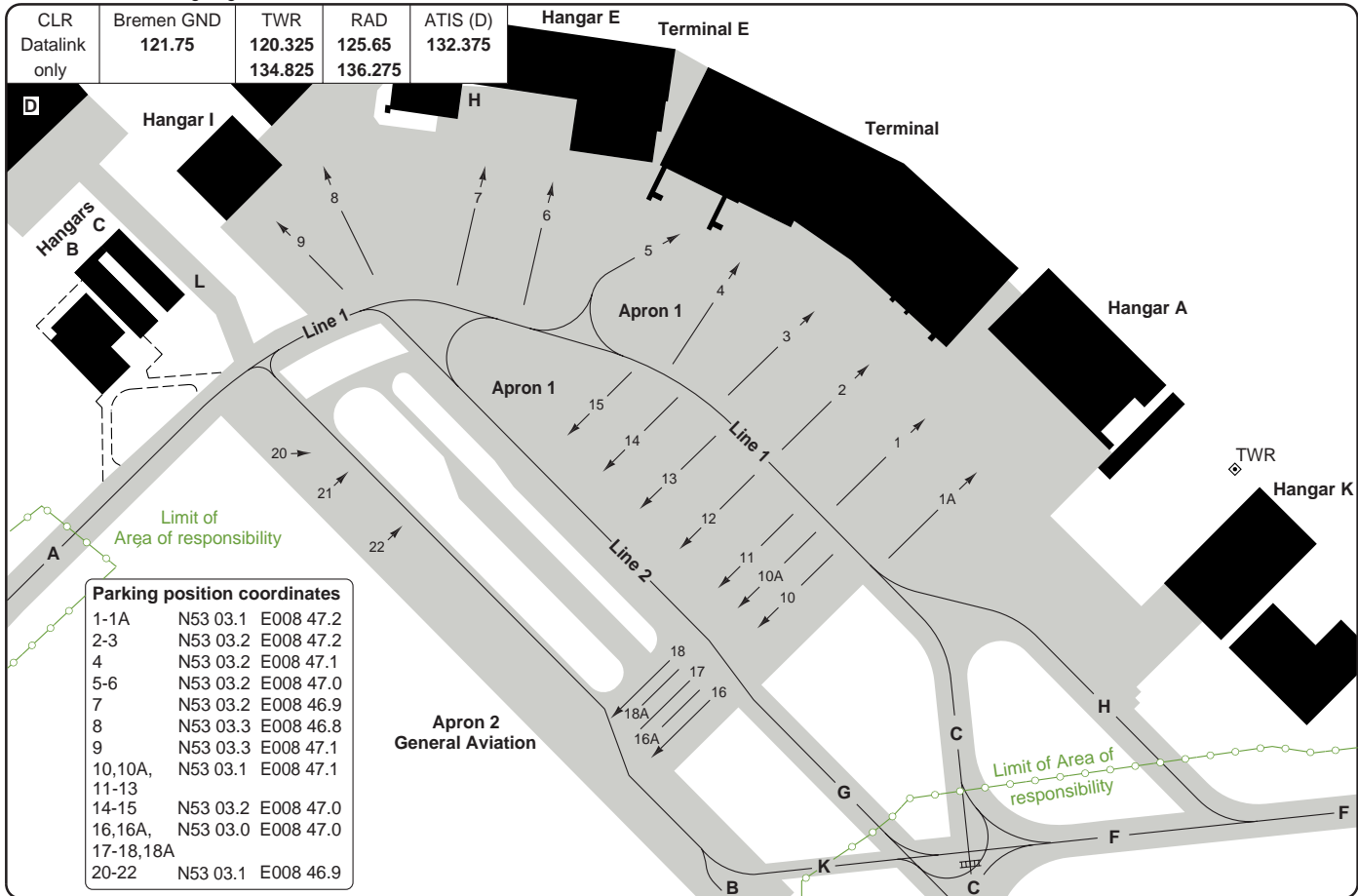
10 - 2

© Navtech - eddw02iaorg0

Change: Spec update

THIS CHART IS A PART OF NAVIGRAPH NDAC AND IS INTENDED FOR FLIGHT SIMULATION USE ONLY

Change: Stands, Stand coord.



GROUND Parking

W/F 20 SEP 12

10 - 3 | 20 AUG 12

Germany - EDDW / BRE

BREMEN

10 - 3

Parking position coordinates		
1-1A	N53 03.1	E008 47.2
2-3	N53 03.2	E008 47.2
4	N53 03.2	E008 47.1
5-6	N53 03.2	E008 47.0
7	N53 03.2	E008 46.9
8	N53 03.3	E008 46.8
9	N53 03.3	E008 47.1
10,10A,	N53 03.1	E008 47.1
11-13		
14-15	N53 03.2	E008 47.0
16,16A,	N53 03.0	E008 47.0
17-18,18A		
20-22	N53 03.1	E008 46.9

GENERAL

BREMEN

10 - 4

GENERAL

1. **NIGHT FLIGHT RESTRICTION**
 - 1.1 Noise certified ACFT: (ICAO Annex 16, Chapter 2) No TKOF/LDG: 21-06.
 - 1.2 Noise certified ACFT: (ICAO Annex 16, Chapter 3) No TKOF/LDG: 2130 - 0500.
- 2 **SPEED**
MAX 250kt below FL100.
3. **TWY RESTRICTION**
 - 3.1 TWY B CLSD for ACFT more than 5.7t .
TWY B 7.5m/24ft TWY K 10.5m/34ft width.
TWY L 15m/49ft width.
 - 3.2 TWY K MAX wingspan 24m/78ft.
TWY H MAX wingspan 36m/118ft.
 - 3.3 Northern taxilane (line1) is avbl for ACFT with MAX wingspan 52m/170ft.
 - 3.4 Southern taxilane (line2) is avbl for ACFT with MAX wingspan 36m/118ft.
 - 3.5 TWY G (between TWY C and 10A inclusively) for ACFT with MAX wingspan 52m/170ft.
- 4 **PARKING**
Apron 2 is closed between TWY A and 16 for ACFT with MAX wingspan 30m/98ft and with MAX wheelbase 18m/59ft.
5. **TRAFFIC NOTE**
Visual APCH are not permitted.

ARRIVAL

1. **NOISE ABATEMENT PROC**
 - 1.1. Arrange flight to leave IAF at a speed which permits OPS in clean configuration. Maintain speed until 12nm from TDP. 210kt +/- 10kt recommended.
 - 1.2. Recommended 160kt +/- 10kt to OM with intermediate flap setting as appropriate for the type of ACFT concerned with the landing gear retracted. This phase will normally include the transition from level flight to descent on the GP which should be intercepted at a height of not lower than 3000ft above TDZ elevation.
 - 1.3. Landing configuration should be established shortly prior to or over the OM.
- 2 **TAXI**
After LDG RWY 27 TWY A mandatory.

DEPARTURE

1. **NOISE ABATEMENT PROCEDURE**
 - 1.1. Noise certified ACFT in accordance with ICAO Annex 16, Chapter 2:
 - a) TKOF to 1500ft GND
 - take-off power
 - take-off flaps
 - climb at V2+10kt
 - b) At 1500ft GND
 - reduce power to not less than climb power
 - c) From 1500ft GND to 3000ft GND
 - climb at V2+10kt
 - d) At 3000ft GND
 - acceleration during climb and retraction of flaps.
 - normal transition to enroute climb
 - 1.2. Noise certified ACFT in accordance with ICAO Annex 16, Chapter 3:
 - a) TKOF to 1500ft GND
 - take-off power
 - take-off flaps
 - climb at V2+10kt
 - b) At 1500ft GND
 - reduce power to not less than climb power
 - acceleration during climb and retraction of flaps.
 - normal transition to enroute climb

GENERAL

BREMEN

10 - 5

2. **PUSH-BACK**

Push-back from 01 - 09 and 19 required.

3. **TAKE-OFF POSITION**

3.1 Prop ACFT with MTOW over 2000kg are requested to use intersection E for TKOF RWY27.

3.2 Wake turbulence separation is provided using distance-based separation minima.

4. **DATALINK**

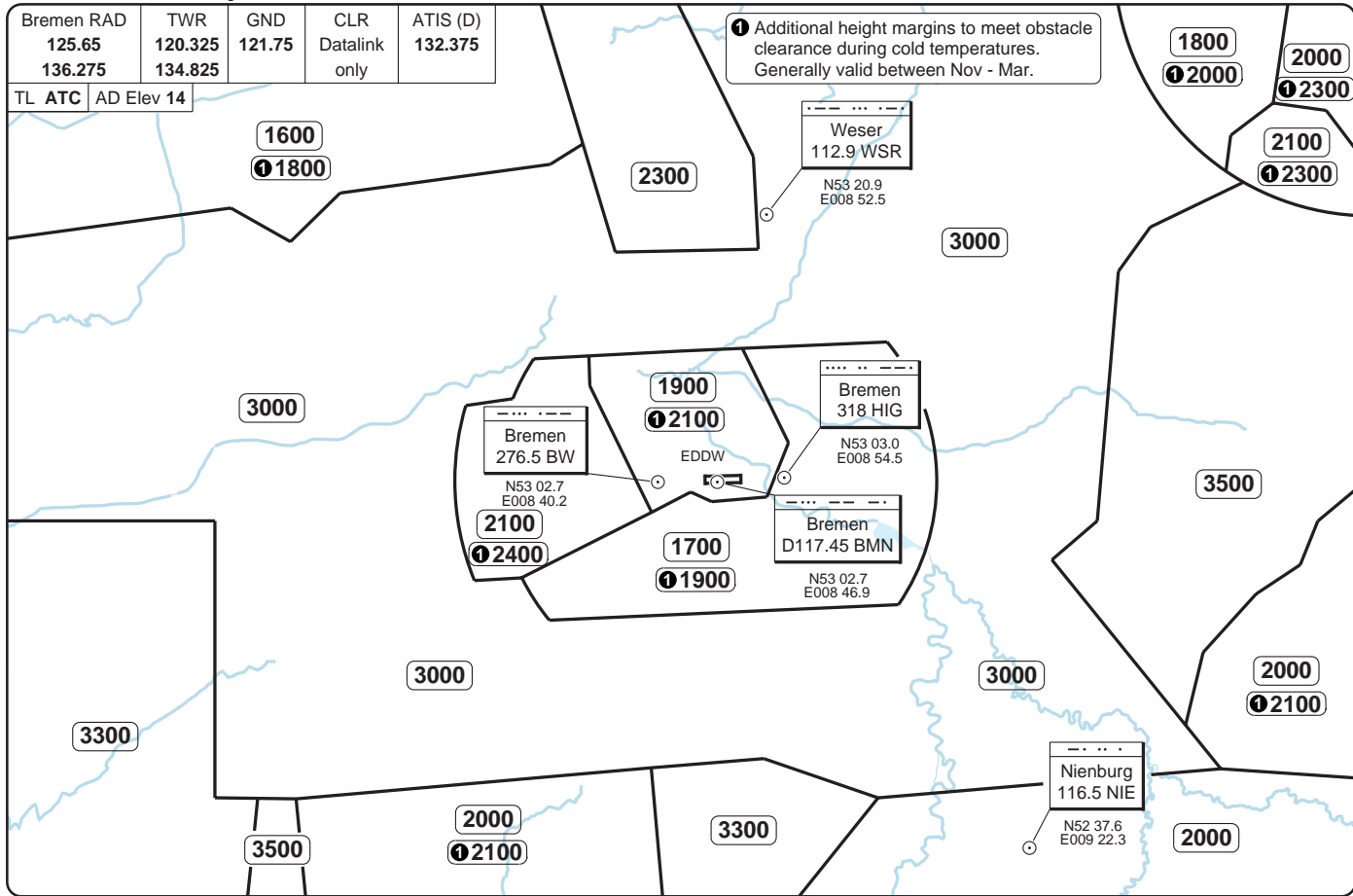
Air Traffic Flow Management (ATFM) regulated flights: earliest 30min prior CTOT, REQ start-up approval and en-route CLR via DLK. To be obtained latest 16min prior CTOT.

Flights not regulated by ATFM: earliest 25min prior EOBT, REQ start-up approval and en-route CLR via DLK. To be obtain latest 11min prior EOBT.

Bremen RAD	TWR	GND	CLR	ATIS (D)
125.65	120.325	121.75	Datalink only	132.375
136.275	134.825			

TL ATC AD Elev 14

Additional height margins to meet obstacle clearance during cold temperatures. Generally valid between Nov - Mar.



RADAR Minimum Altitudes

20 - 1 | 08 SEP 10

Germany - EDDW / BRE

BREMEN

THIS CHART IS A PART OF NAVIGRAPH NDAC AND IS INTENDED FOR FLIGHT SIMULATION USE ONLY

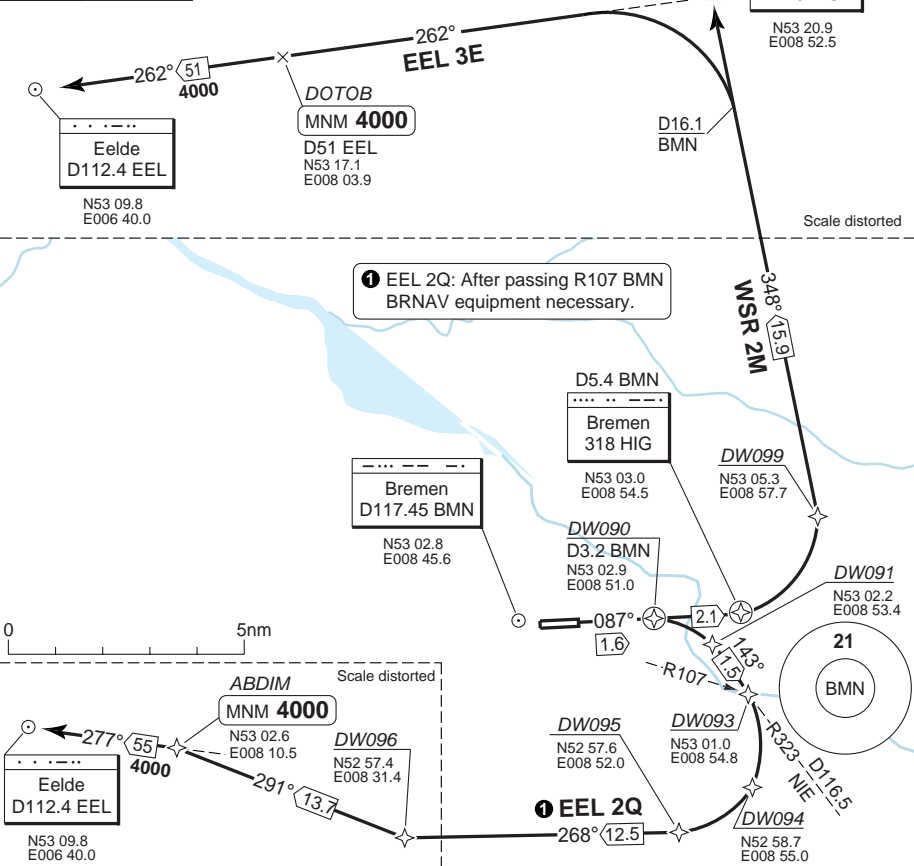
Change: Minimum altitudes.

SID RWY 09 **RNAV** GPS/FMS Overlay North, West

BREMEN

Bremen GND 121.75	CLR Datalink only	TWR 120.325 134.825	RAD 125.65 136.275	ATIS (D) 132.375
-----------------------------	-------------------------	---	--	----------------------------

TA **5000** | AD Elev **14**



COM: CTC Bremen RAD 125.65 immediately after TKOF.

SPEED: MAX 250kt below FL100.

ALT RESTRICTION: Climb to **4000**.

SID	Routing	Altitudes
EEL 2Q	Climb on R087 BMN - at D3.2 BMN turn right - 143°/R323 NIE - at R107 BMN turn right - 268° - DW096 - turn right - 291° ABDIM - turn left - 277°/R097 EEL RNAV: DW090 - DW091 - DW093 - DW094 - DW095 - DW096 - ABDIM - EEL	ABDIM MNM 4000
EEL 3E	Climb on R087 BMN - at HIG/D5.4 BMN - turn left - 348°/R168 WSR - at D16.1 BMN turn left - R262 WSR/R082 EEL - DOTOB - EEL RNAV: HIG - DW099 - WSR - DOTOB - EEL	DOTOB MNM 4000
WSR 2M	Climb on R087 BMN - at HIG/D5.4 BMN turn left - 348°/R168 WSR - WSR RNAV: HIG - DW099 - WSR	

© Navtech - eddw01.daorg

Change: Completely revised.

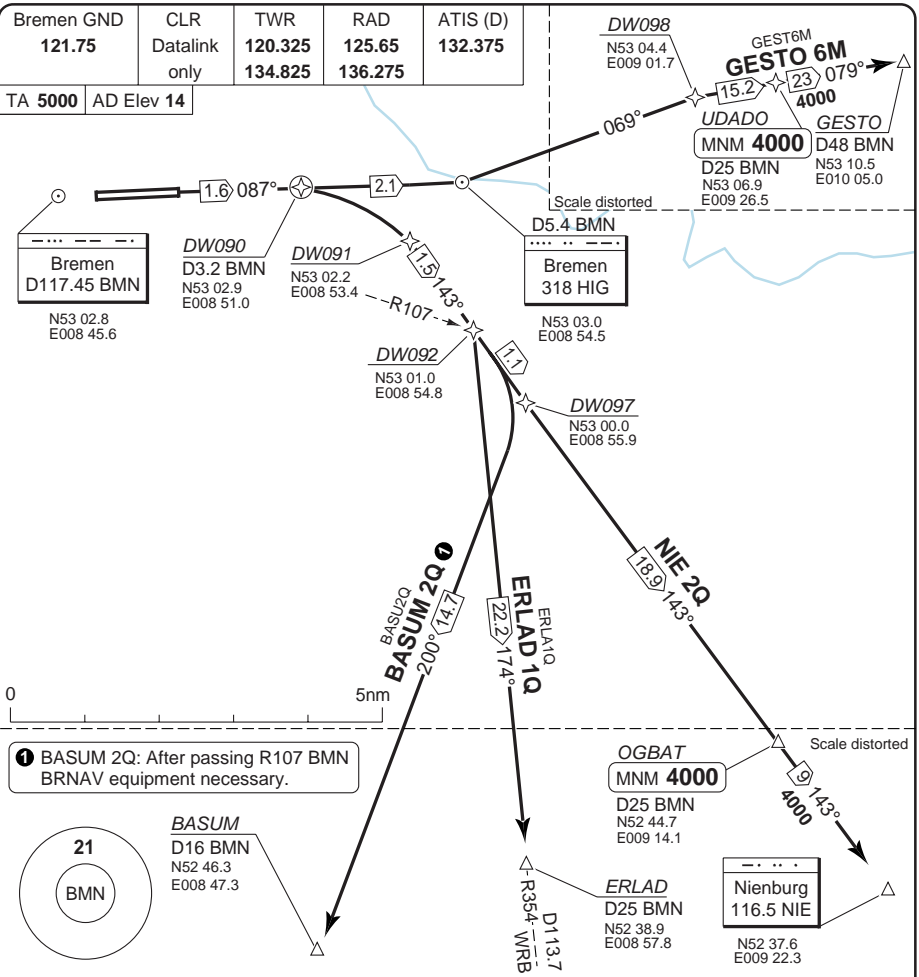
THIS CHART IS A PART OF NAVIGRAPH NDAC AND IS INTENDED FOR FLIGHT SIMULATION USE ONLY

SID RWY 09 **RNAV** GPS/FMS Overlay South, East

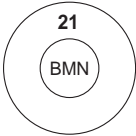
BREMEN

Bremen GND 121.75	CLR Datalink only	TWR 120.325 134.825	RAD 125.65 136.275	ATIS (D) 132.375
-----------------------------	-------------------------	---	--	----------------------------

TA **5000** AD Elev **14**



1 BASUM 2Q: After passing R107 BMN BRNAV equipment necessary.



BASUM
D16 BMN
N52 46.3
E008 47.3

COM: CTC Bremen RAD 125.65 immediately after TKOF.
SPEED: MAX 250kt below FL100.
ALT RESTRICTION: Climb to **4000**.

SID	Routeing	Altitudes
BASUM 2Q	Climb on R087 BMN - at D3.2 BMN turn right - 143°/R323 NIE - at R107 BMN turn right - 200° - BASUM RNAV: DW090 - DW091 - DW097 - BASUM	
ERLAD 1Q	Climb on R087 BMN - at D3.2 BMN turn right - 143°/R323 NIE - intcpt 174° from HIG (174°/R354 WRB) - ERLAD RNAV: DW090 - DW091 - DW092 - ERLAD	
GESTO 6M	Climb on R087 BMN - HIG (D5.4 BMN) turn left - 069° - intcpt R079 BMN - UDADO - GESTO RNAV: HIG - DW098 - UDADO - GESTO	UDADO MNM 4000
NIE 2Q	Climb on R087 BMN - at D3.2 BMN turn right - 143°/R323 NIE - OGBAT - NIE RNAV: DW090 - DW091 - OGBAT - NIE	OGBAT MNM 4000

30 - 2

© Navtech - eddw02daorg0

Change: Completely revised.

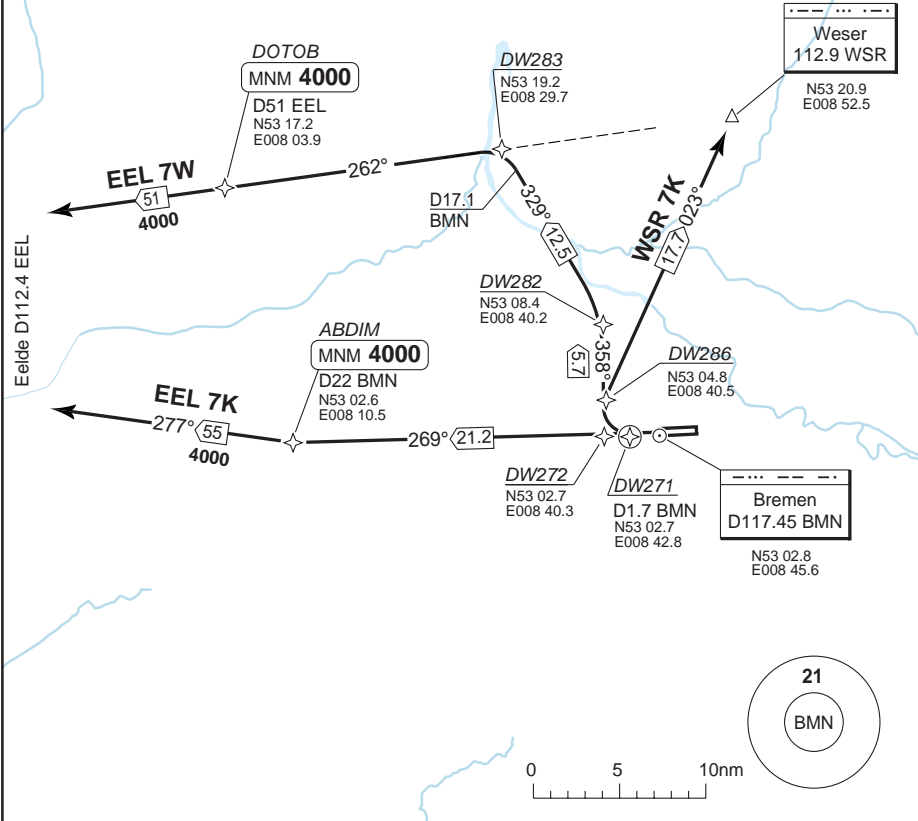
THIS CHART IS A PART OF NAVIGRAPH NDAC AND IS INTENDED FOR FLIGHT SIMULATION USE ONLY

SID RWY 27 **RNAV** GPS/FMS Overlay North, West

BREMEN

Bremen GND 121.75	CLR Datalink only	TWR 120.325 134.825	RAD 125.65 136.275	ATIS (D) 132.375
-----------------------------	-------------------------	---	--	----------------------------

TA **5000** AD Elev **14**



COM: CTC Bremen RAD 125.65 immediately after TKOF.

SPEED: MAX 250kt below FL100.

ALT RESTRICTION: Climb to **4000**.

SID	Routeing	Altitudes
EEL 7K	Climb on R269 BMN - at ABDIM turn right - 277°/R097 EEL - EEL RNAV: BMN - ABDIM - EEL	ABDIM MNM 4000
EEL 7W	Climb on R267 BMN - at D1.7 BMN turn right - 358° - R329 BMN - at D17.1 BMN turn left - R262 WSR/R082 EEL - DOTOB - EEL RNAV: BMN - DW272 - DW282 - DW283 - DOTOB - EEL	DOTOB MNM 4000
WSR 7K	Climb on R267 BMN - at D1.7 BMN - turn right - 023°/R203 WSR - WSR RNAV: DW271 - DW286 - WSR	

© Navitech - eddw03daorg

Change: DOTOB, ABDIM added, BMN position.

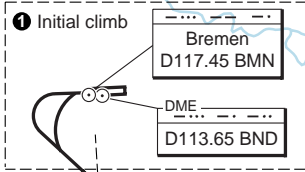
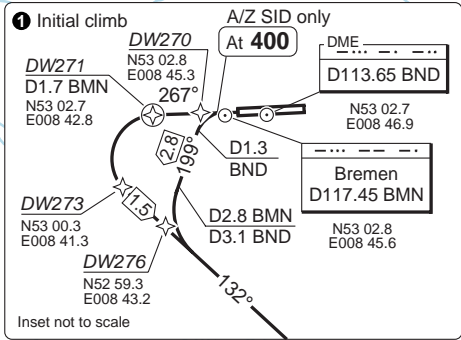
THIS CHART IS A PART OF NAVIGRAPH NDAC AND IS INTENDED FOR FLIGHT SIMULATION USE ONLY

SID RWY 27 **RNAV** GPS/FMS Overlay South

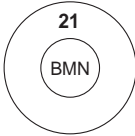
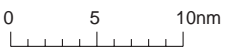
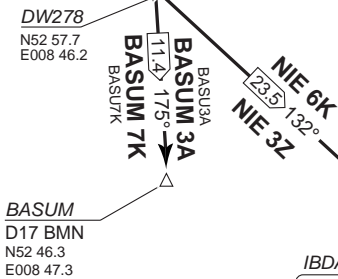
BREMEN

Bremen GND 121.75	CLR Datalink only	TWR 120.325 134.825	RAD 125.65 136.275	ATIS (D) 132.375
----------------------	-------------------------	---------------------------	--------------------------	---------------------

TA 5000 | AD Elev 14



30 - 4



COM: CTC Bremen RAD 125.65 immediately after TKOF.
SPEED: MAX 250kt below FL100.
ALT RESTRICTION: Climb to **4000**.

SID	Routing	Altitudes
BASUM 3A	Climb on 267° - at 400 - turn left (complete turn within D1.3 BND) - 199° - at D2.8 BMN (D3.1 BND) turn left - R312 NIE - R175 BMN - BASUM RNAV: DW271 - DW273 - DW278 - BASUM	
BASUM 7K	Climb on R267 BMN - at D1.7 BMN - turn left - R312 NIE - R175 BMN - BASUM RNAV: DW271 - DW273 - DW278 - BASUM	
NIE 3Z	Climb on 267° - at 400 - turn left (complete turn within D1.3 BND) - 199° - at D2.8 BMN (D3.1 BND) turn left - R312 NIE - IBDAG - NIE RNAV: DW270 - DW276 - IBDAG - NIE	IBDAG MNM 4000
NIE 6K	Climb on R267 BMN - at D1.7 BMN - turn left - R312 NIE - IBDAG - NIE RNAV: DW271 - DW273 - IBDAG - NIE	IBDAG MNM 4000

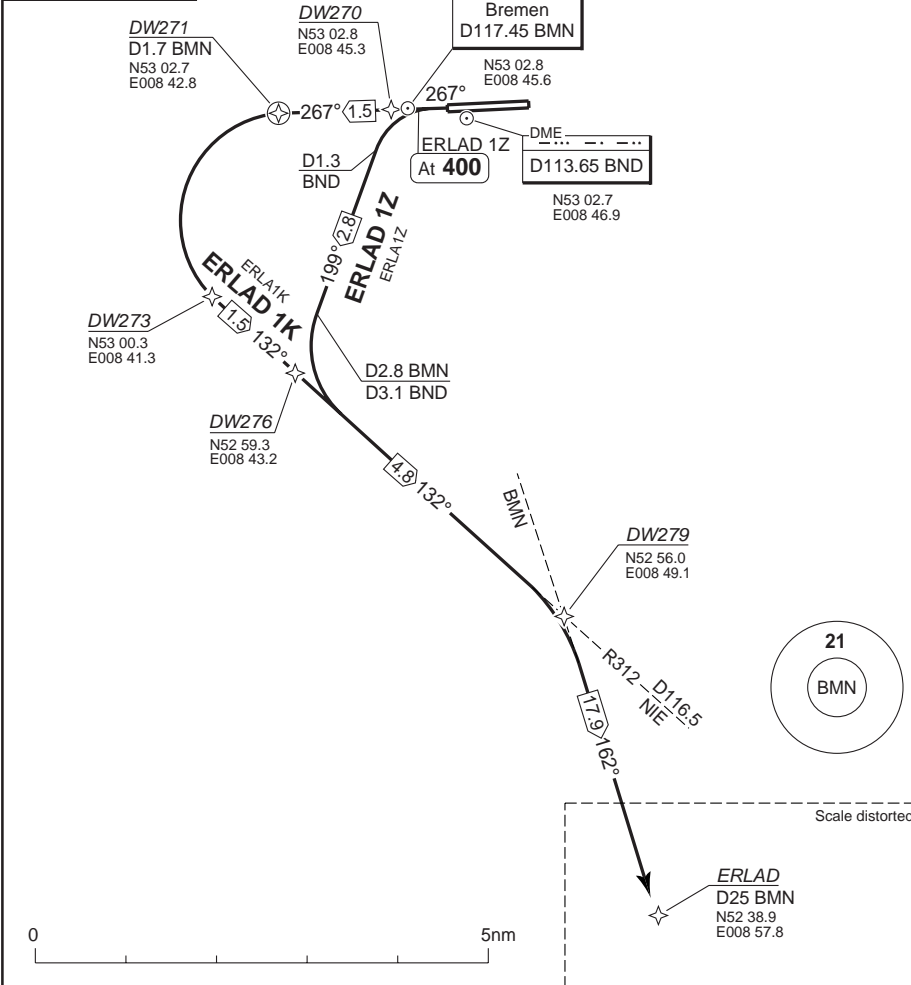
Change: BMN position, IBDAG added.

SID RWY 27 **RNAV** GPS/FMS Overlay South ERLAD 1K/1Z

BREMEN

Bremen GND 121.75	CLR Datalink only	TWR 120.325 134.825	RAD 125.65 136.275	ATIS (D) 132.375
-----------------------------	-------------------------	---	--	----------------------------

TA **5000** AD Elev **14**



COM: CTC Bremen RAD 125.65 immediately after TKOF.
SPEED: MAX 250kt below FL100.
ALT RESTRICTION: Climb to **4000**.

SID	Routing
ERLAD 1K	Climb on R267 BMN - at D1.7 BMN turn left - 132°/R312 NIE - intcpt R162 BMN - ERLAD RNAV: DW271 - DW273 - DW279 - ERLAD
ERLAD 1Z	Climb on R267 BMN - at 400 - turn left (complete turn within D1.3 BND) - 199° - at D2.8 BMN (D3.1 BND) turn left - 132°/R312 NIE - intcpt R162 BMN - ERLAD RNAV: DW270 - DW276 - DW279 - ERLAD

Change: New procedure.

© Navitech - eddw05daorg0

30 - 5

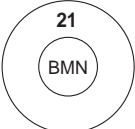
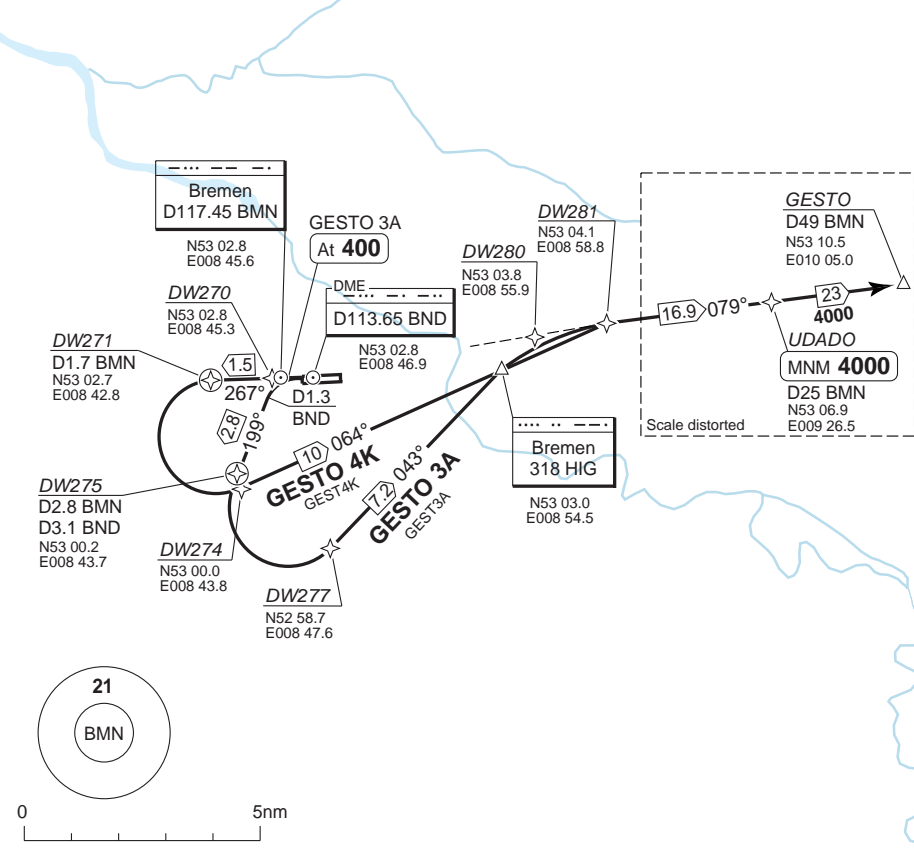
SID RWY 27 **RNAV** GPS/FMS Overlay East

BREMEN

Bremen GND 121.75	CLR Datalink only	TWR 120.325 134.825	RAD 125.65 136.275	ATIS (D) 132.375
-----------------------------	-------------------------	---	--	----------------------------

TA **5000** | AD Elev **14**

30 - 6



COM: CTC Bremen RAD 125.65 immediately after TKOF.

SPEED: MAX 250kt below FL100.

ALT RESTRICTION: Climb to **4000**.

SID	Routeing	Altitudes
GESTO 3A	Climb on 267° - at 400 - turn left (complete turn within D1.3 BND) - 199° - at D2.8 BMN (D3.1 BND) turn left - 043° - HIG - intcpt R079 BMN - UDADO - GESTO RNAV: DW270 - DW275 - DW277 - DW280 - UDADO - GESTO	UDADO MNM 4000
GESTO 4K	Climb on R267 BMN - at D1.7 BMN - turn left - 064° - HIG - intcpt R079 BMN - UDADO - GESTO RNAV: DW271 - DW274 - DW281 - UDADO - GESTO	UDADO MNM 4000

Change: BMN position, UDADO added.

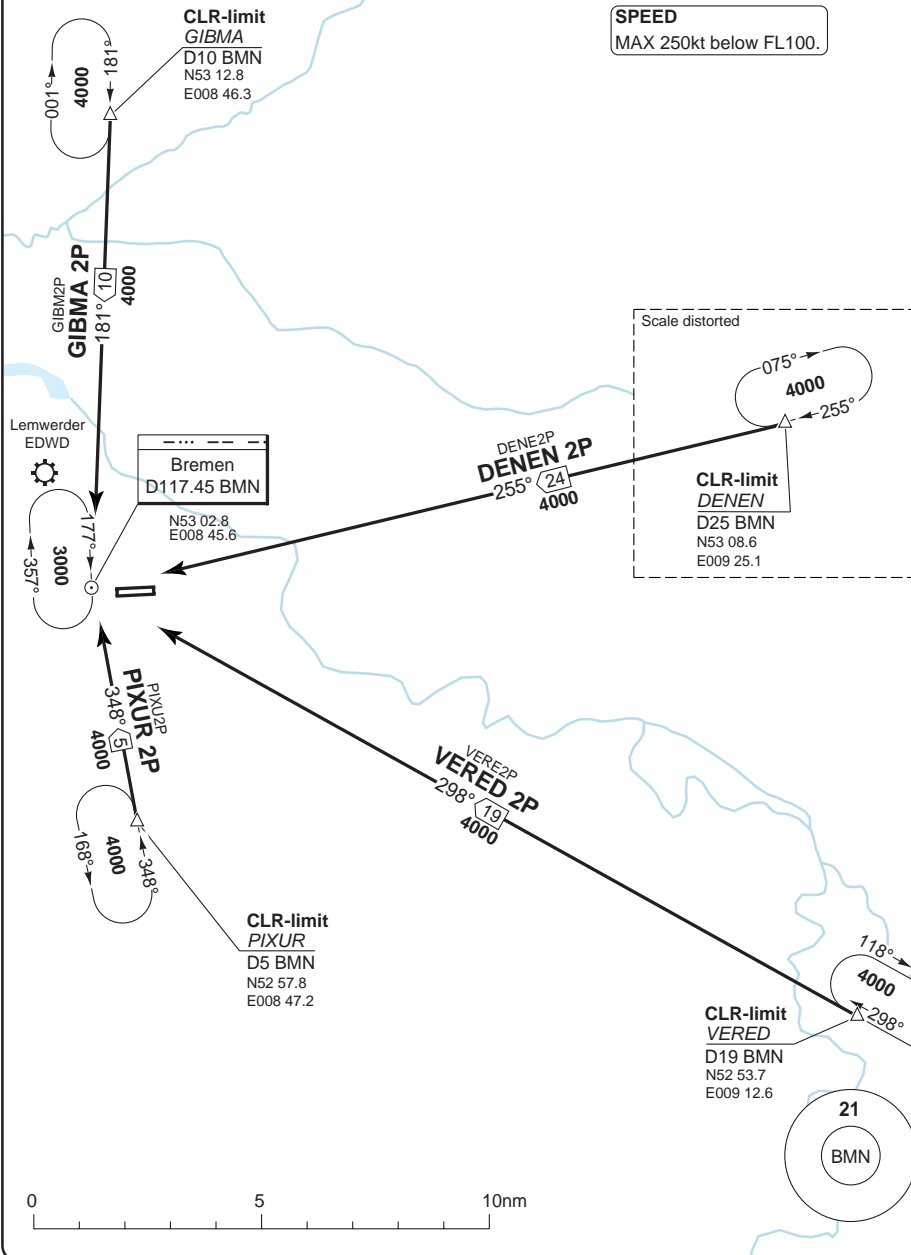
THIS CHART IS A PART OF NAVIGRAPH NDAC AND IS INTENDED FOR FLIGHT SIMULATION USE ONLY

STAR RWY 09/27

Bremen RAD 125.65 136.275	TWR 120.325 134.825	GND 121.75	ATIS (D) 132.375
---------------------------------	---------------------------	---------------	---------------------

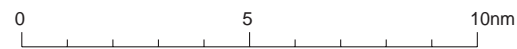
TL ATC AD Elev 14

SPEED
MAX 250kt below FL100.



40 - 1

© Navitech - eddw01aaorg0



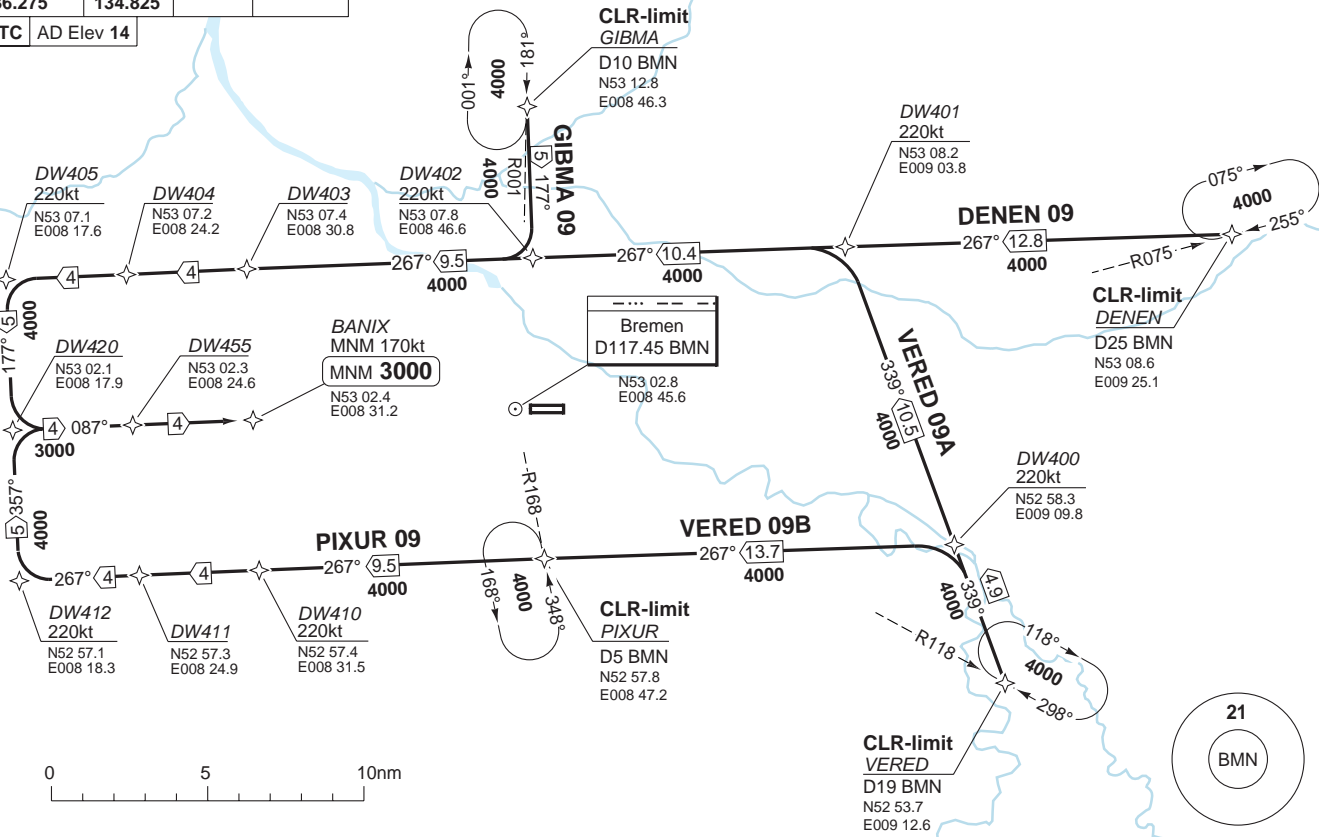
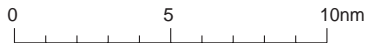
Change: BMN position, tracks, radials, holds and designators.

THIS CHART IS A PART OF NAVIGRAPH NDAC AND IS INTENDED FOR FLIGHT SIMULATION USE ONLY

Bremen RAD	TWR	GND	ATIS (D)
125.65	120.325	121.75	132.375
136.275	134.825		

TL	ATC	AD Elev 14
----	-----	------------

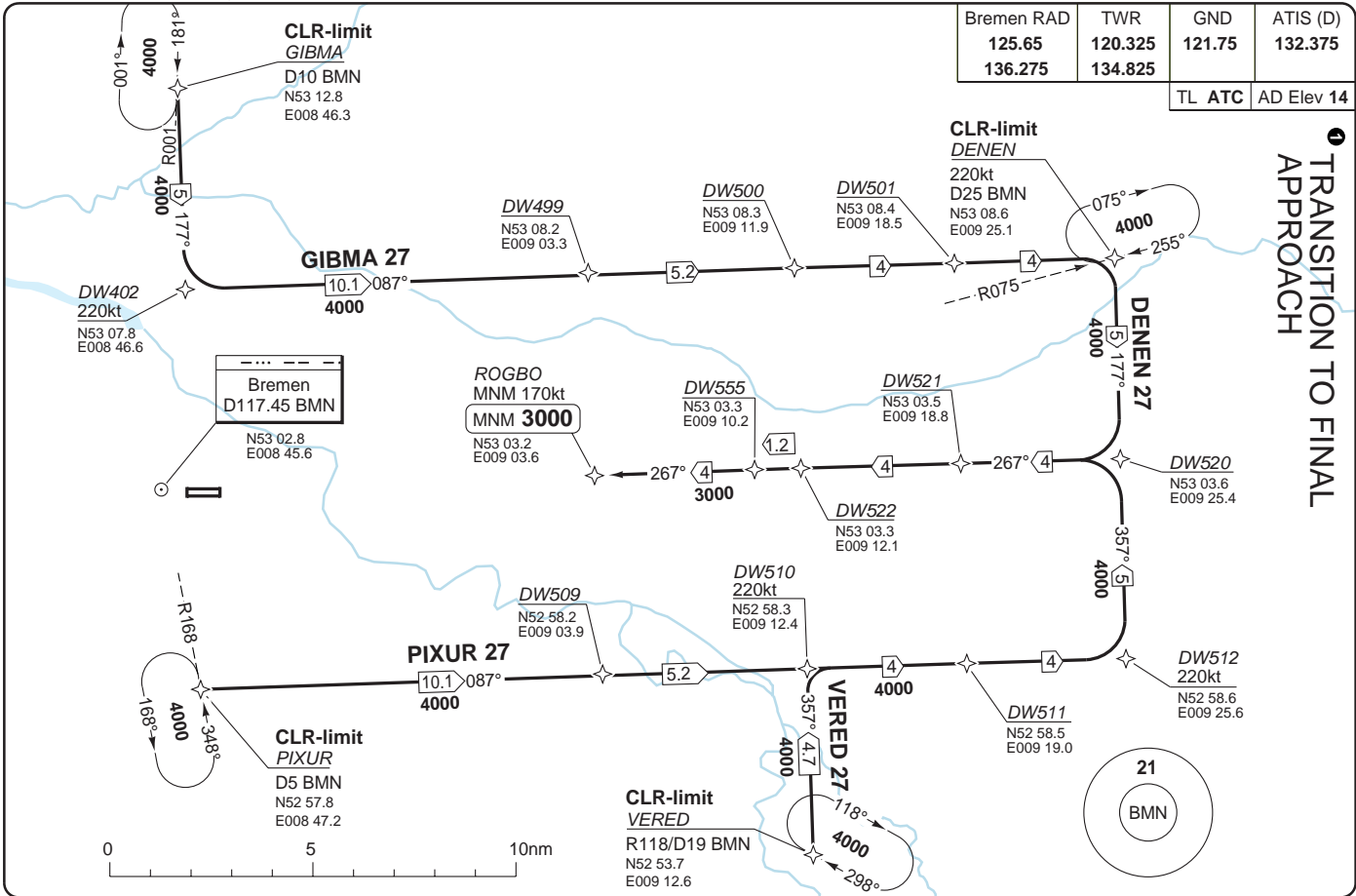
① TRANSITION TO FINAL APPROACH



Change: BMN, radials and holds.

THIS CHART IS A PART OF NAVIGRAPH NDAC AND IS INTENDED FOR FLIGHT SIMULATION USE ONLY

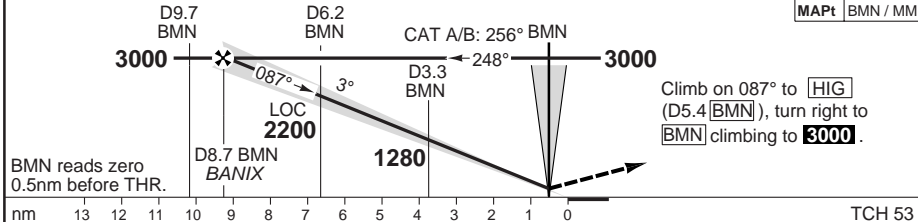
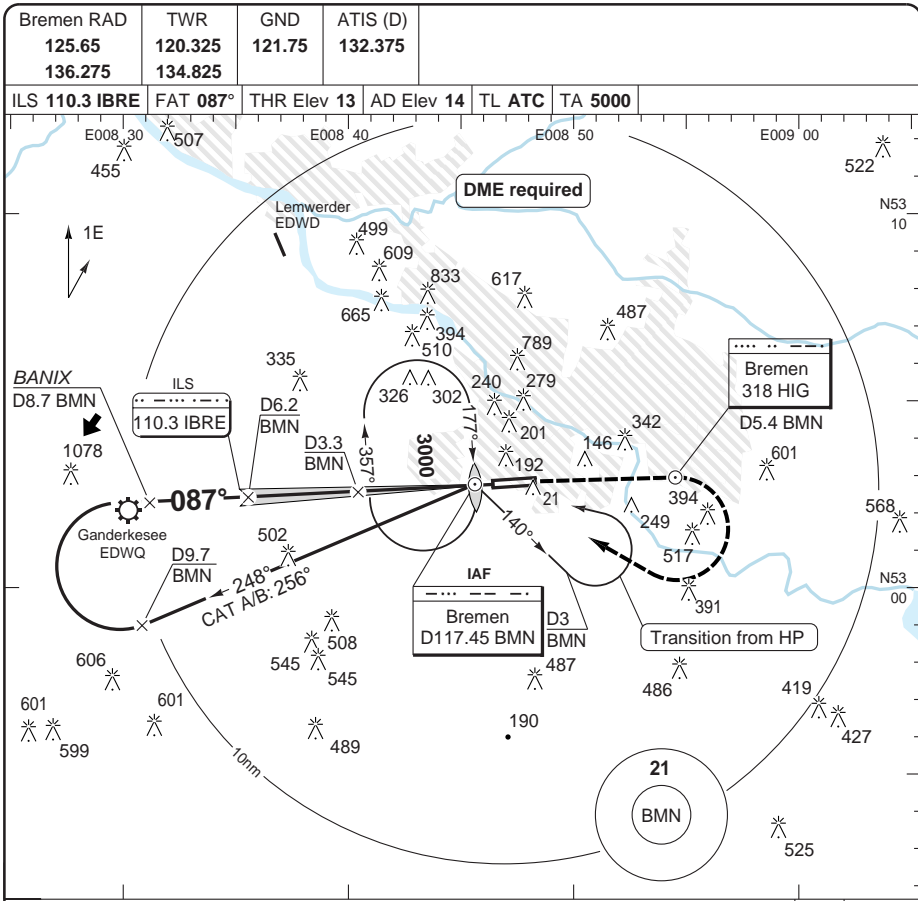
© Navtech - eddw03aaorg0



Reverse side blank

ILS RWY 09

BREMEN



ACFT	CAT III B					ACFT	CAT II	ILS	LOC+DME	DME BMN	3.0° ALT	LDA 2034x45 6673x147ft P 3° (51)
ALL	Available					A	RA 99 300m	220 (200) 550m	470 (460) 1400m	8.7	3000	
						B				7	2460	
						C				6	2140	
						D				5	1820	
										4	1500	
										3	1190	
										2	870	
										1	550	

Note: Circling NA.

Change: BMN, MAPt, OBST

THIS CHART IS A PART OF NAVIGRAPH NDAC AND IS INTENDED FOR FLIGHT SIMULATION USE ONLY

© Navtech - eddw01iap00

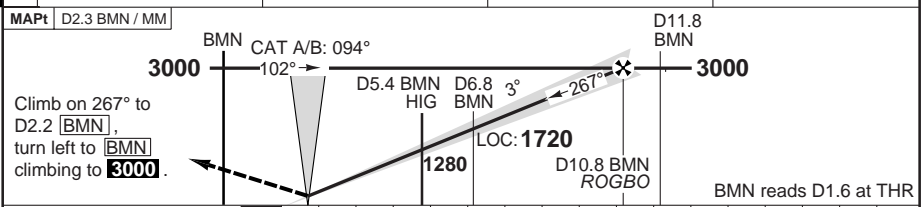
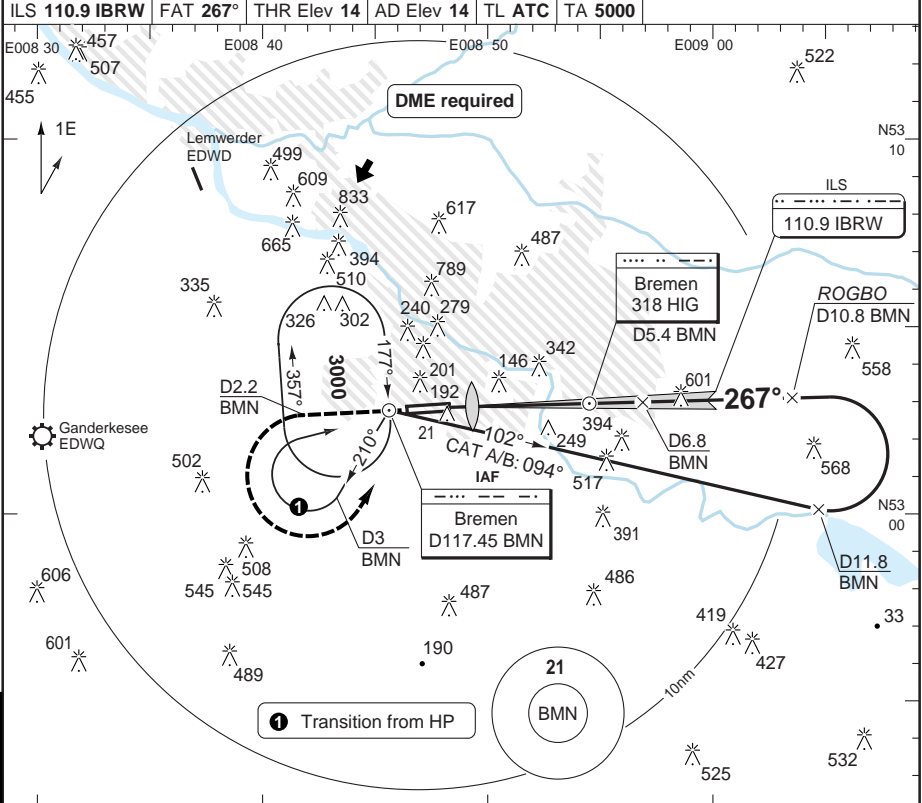
50 - 1

FALS

ILS RWY 27

BREMEN

Bremen RAD 125.65 136.275	TWR 120.325 134.825	GND 121.75	ATIS (D) 132.375
ILS 110.9 IBRW	FAT 267°	THR Elev 14	AD Elev 14
TL ATC	TA 5000		



MAPt	D2.3 BMN / MM	D11.8 BMN															
<p>Climb on 267° to D2.2 [BMN], turn left to [BMN] climbing to 3000.</p> <p>BMN reads D1.6 at THR</p>																	
TCH 50	0	1	2	3	4	5	6	7	8	9	10	11	12	13	14	15	16 nm
ACFT	CAT IIIIB	ACFT	CAT II	ILS	LOC+DME	DME	3.0°	LDA 2034x45									
ALL	Available	A	RA 98	220 (200)	470 (460)	10.8	3000	6673x147ft									
		B	300m	550m	1400m	9	2430	P 3° (51)									
		C				8	2110										
		D				7	1790										
						6	1470										
						5	1150										
						4	830										
						3	510										
<p>Note: Circling NA.</p>																	
GS	80	100	120	140	160												
ROD 3.0°	420	540	650	750	860												

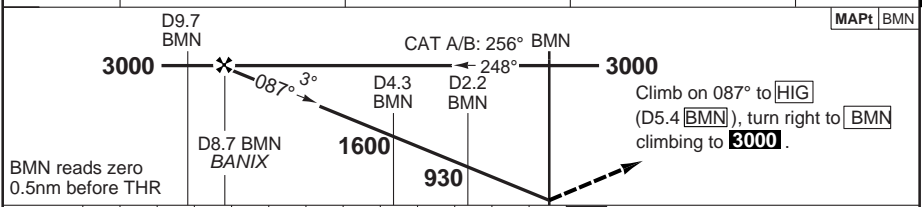
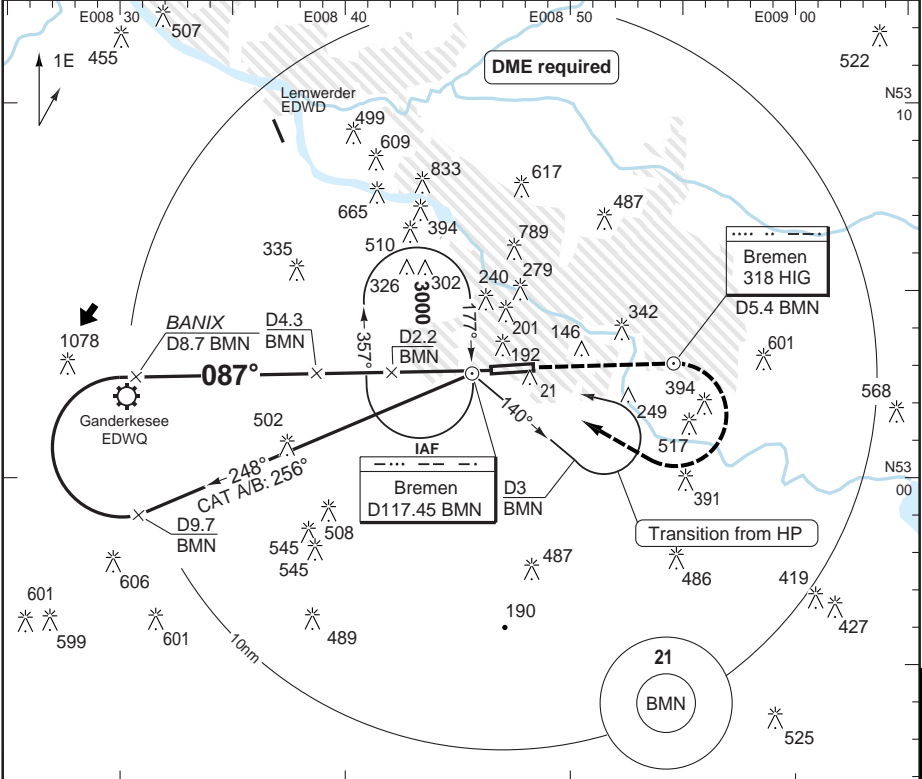
© Navtech - eddw02lap00

VOR RWY 09

BREMEN

Bremen RAD 125.65 136.275	TWR 120.325 134.825	GND 121.75	ATIS (D) 132.375
---------------------------------	---------------------------	---------------	---------------------

VOR/DME 117.45 BMN	FAT 087°	THR Elev 13	AD Elev 14	TL ATC	TA 5000
--------------------	----------	-------------	------------	--------	---------



nm		13	12	11	10	9	8	7	6	5	4	3	2	1	0
ACFT	VOR+DME	Note: Circling NA.													
A	550 (540) 1500m														
B															
C	550 (540) 1700m														
D															
GS	80	100	120	140	160										
ROD 3.0°	420	540	650	760	860										
DME BMN	3.0° ALT	LDA 2034x45 6673x147ft P 3° (51)													
8.7	3000														
7	2460														
6	2140														
5	1820														
4	1500														
3	1190														
2	870														
1	550														

© Navtech - eddw03iap00

50 - 3

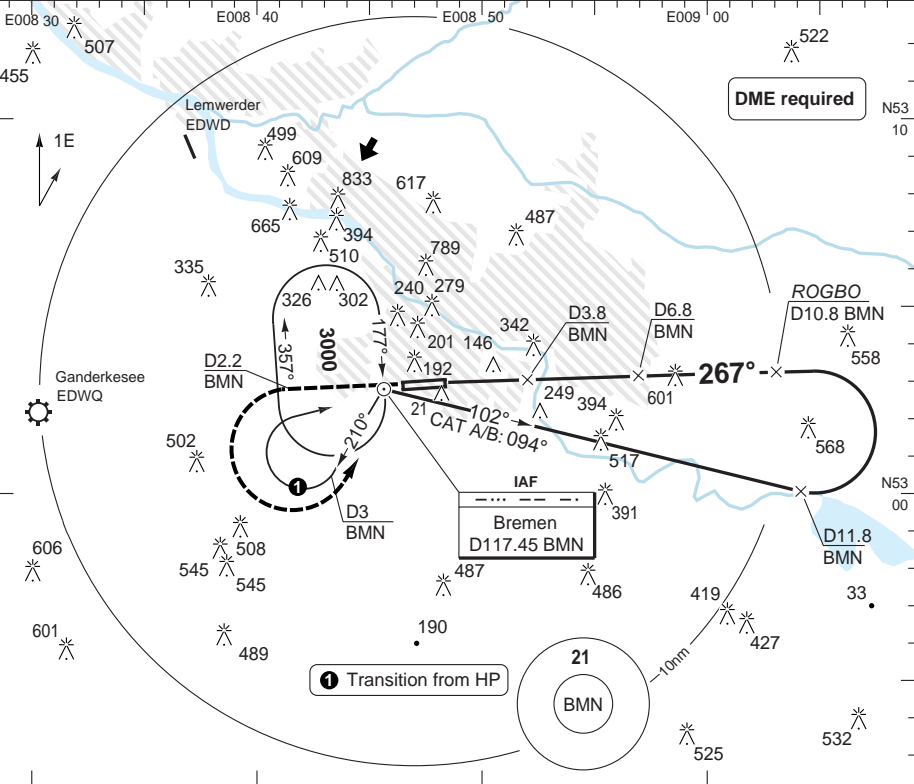
FALS

VOR RWY 27

BREMEN

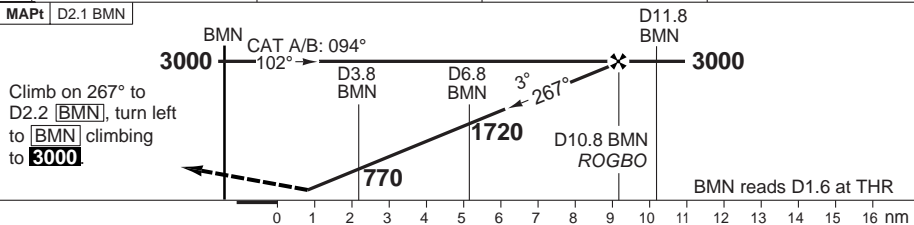
Bremen RAD 125.65 136.275	TWR 120.325 134.825	GND 121.75	ATIS (D) 132.375
---------------------------------	---------------------------	---------------	---------------------

VOR/DME 117.45 BMN	FAT 267°	THR Elev 14	AD Elev 14	TL ATC	TA 5000
--------------------	----------	-------------	------------	--------	---------



PANS OPS

50 - 4



ACFT	VOR+DME	Note: Circling NA.					DME 3.0°	LDA 2034x45
A	480 (470) 1500m						BMN ALT	6673x147ft
B							10.8	P 3° (51)
C							9	
D							8	
GS	80	100	120	140	160	7	1790	
ROD 3.0°	420	540	650	750	860	6	1470	
						5	1150	
						4	830	
						3	510	

© Navtech - eddw04iap00
EU OPS

FALS

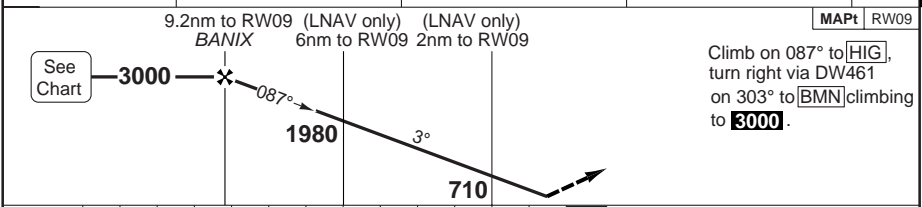
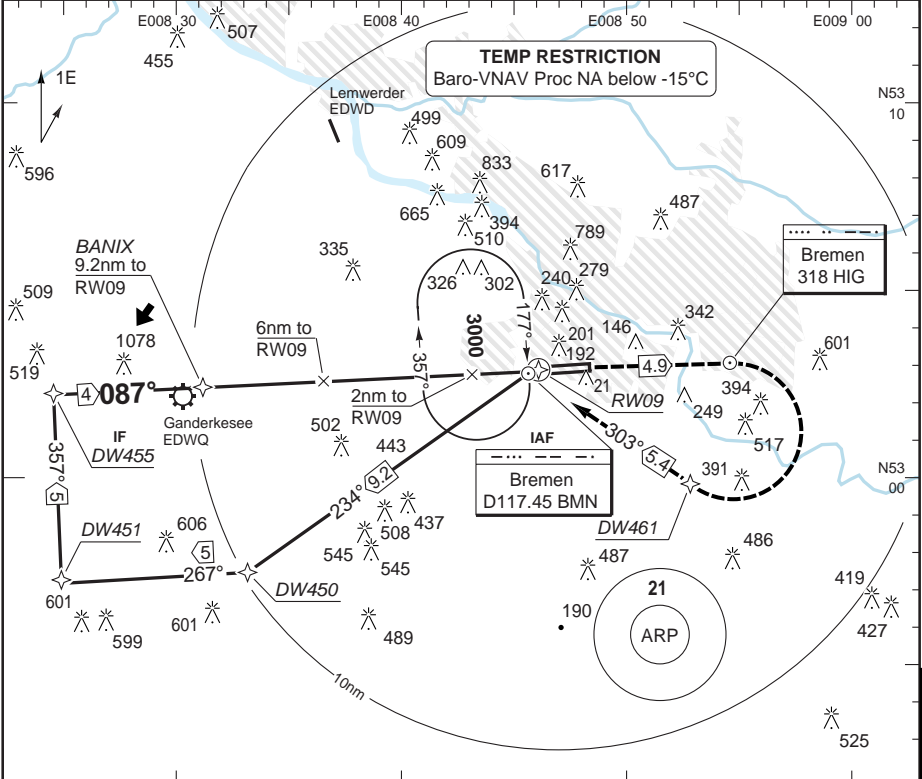
Change: OBST

RNAV (GPS) RWY 09

BREMEN

Bremen RAD 125.65 136.275	TWR 120.325 134.825	GND 121.75	ATIS (D) 132.375
---	---	----------------------	----------------------------

RNAV	FAT 087°	THR Elev 13	AD Elev 14	TL ATC	TA 5000
------	-----------------	--------------------	-------------------	--------	----------------



nm	13	12	11	10	9	8	7	6	5	4	3	2	1	0	TCH 53
----	----	----	----	----	---	---	---	---	---	---	---	---	---	---	--------

ACFT	RNAV/VNAV	RNAV	Note: Circling NA.
A			
B	420 (400) 1100m	440 (430) 1300m	
C			
D			

GS	80	100	120	140	160
ROD 3.0°	420	540	650	760	870

THR	3.0° ALT	LDA 2034x45 6673x147ft P 3° (51)
9.2	3000	
7	2300	
6	1980	
5	1660	
4	1340	
3	1030	
2	710	
1.2	440	

© Navtech - eddw05iap00

50 - 5

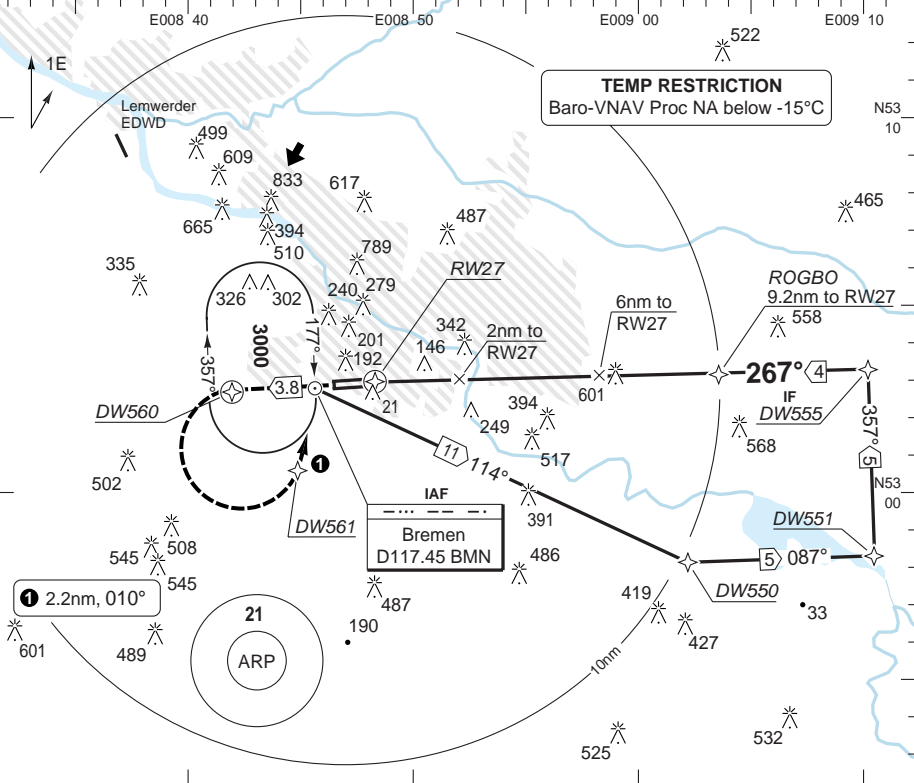
FALS

RNAV (GPS) RWY 27

BREMEN

Bremen RAD 125.65 136.275	TWR 120.325 134.825	GND 121.75	ATIS (D) 132.375
---------------------------------	---------------------------	---------------	---------------------

RNAV	FAT 267°	THR Elev 14	AD Elev 14	TL ATC	TA 5000
------	----------	-------------	------------	--------	---------



MAPt RW27	(LNAV only) 2nm to RW27	(LNAV only) 6nm to RW27	9.2nm to RW27 ROGBO
-----------	-------------------------	-------------------------	------------------------

Climb on 267° to DW560, turn left via DW561 on 010° to **BMN** climbing to **3000**.

See Chart

TCH 50	0	1	2	3	4	5	6	7	8	9	10	11	12	13 nm
--------	---	---	---	---	---	---	---	---	---	---	----	----	----	-------

ACFT	LNAV/VNAV	LNAV	Note: Circling NA.		THR 27	3.0° ALT	LDA 2034x45
A					9.2	3000	6673x147ft
B	400 (380)	440 (430)			7	2310	P 3° (51)
C	1000m	1300m			6	1990	
D					5	1670	
					4	1350	
					3	1030	
					2	710	
					1.2	440	

GS	80	100	120	140	160
ROD 3.0°	420	540	650	750	860

Change: Non RNAV withdrawn, Note, OBST

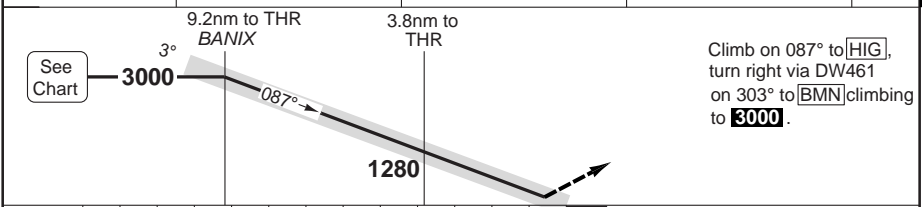
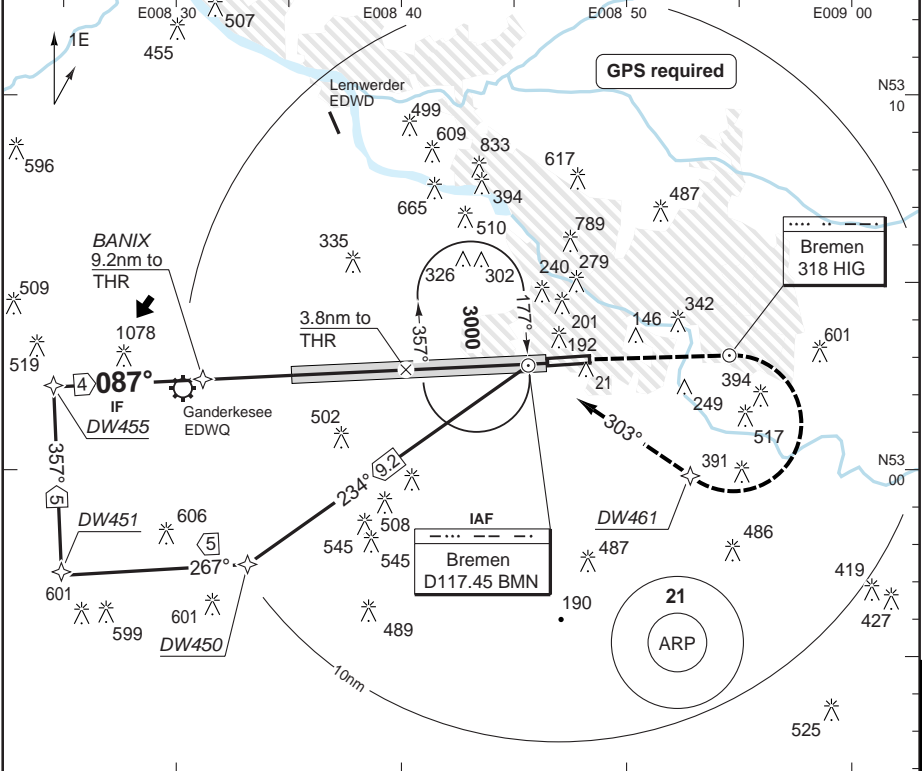
THIS CHART IS A PART OF NAVIGRAPH NDAC AND IS INTENDED FOR FLIGHT SIMULATION USE ONLY

GLS RWY 09

BREMEN

Bremen RAD 125.65 136.275	TWR 120.325 134.825	GND 121.75	ATIS (D) 132.375
---------------------------------	---------------------------	---------------	---------------------

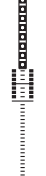
GLS CH21990 GLSW	FAT 087°	THR Elev 13	AD Elev 14	TL ATC	TA 5000
------------------	----------	-------------	------------	--------	---------



nm	13	12	11	10	9	8	7	6	5	4	3	2	1	0	TCH 53
----	----	----	----	----	---	---	---	---	---	---	---	---	---	---	--------

ACFT	GLS	Note: Circling NA.
A		
B	220 (200)	
C	550m	
D		

LDA 2034x45
6673x147ft
P 3° (51)



FALS

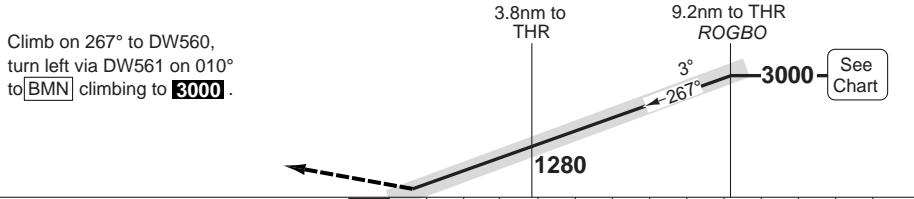
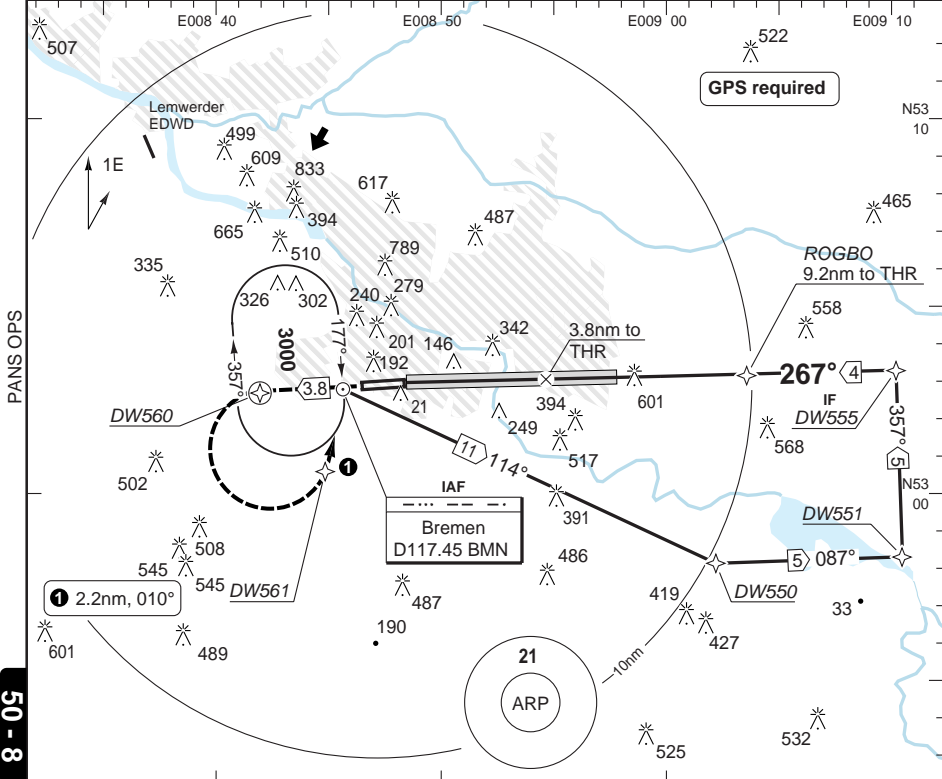
50 - 7

GLS RWY 27

BREMEN

Bremen RAD 125.65 136.275	TWR 120.325 134.825	GND 121.75	ATIS (D) 132.375
---	---	----------------------	----------------------------

GLS CH21168	GBAE	FAT 267°	THR Elev 14	AD Elev 14	TL ATC	TA 5000
--------------------	-------------	-----------------	--------------------	-------------------	---------------	----------------



Climb on 267° to DW560, turn left via DW561 on 010° to **BMN** climbing to **3000**. See Chart

TCH 50	GLS
ACFT	
A	
B	220 (200)
C	550m
D	

Note: Circling NA.

LDA 2034x45
6673x147ft
P 3° (51)

© Navtech - eddw08iap00

Change: Non RNAV withdrawn, Minima, Note, OBST

THIS CHART IS A PART OF NAVIGRAPH NDAC AND IS INTENDED FOR FLIGHT SIMULATION USE ONLY

JAR-OPS Landing Minima

BREMEN

The following Minima is for Public Transport aircraft and conforms to JAR-OPS1 regulations.

STRAIGHT-IN APPROACH		C				D			
R/W	Procedure	DA/ MDA QNH ft	DH/ MDH QFE ft	RVR m	RVR No ALS m	DA/ MDA QNH ft	DH/ MDH QFE ft	RVR m	RVR No ALS m
09	ILS/DME	220	200	550	1000	220	200	550	1000
09	LOC/DME	480	460	1200	2000	480	460	1600	2000
09	VOR/DME	560	540	1200	2000	560	540	1600	2000
09	RNAV (GLS)(1)	320	300	1000	1800	320	300	1400	2000
09	RNAV (L/VNAV)	420	400	1000	1800	420	400	1400	2000
09	RNAV (LNAV)	450	430	1000	1800	450	430	1400	2000
27	ILS/DME	220	200	550	1000	220	200	550	1000
27	LOC/DME	480	460	1200	2000	480	460	1600	2000
27	VOR/DME	490	470	1200	2000	490	470	1600	2000
27	RNAV (GLS)(1)	320	300	1000	1800	320	300	1400	2000
27	RNAV (L/VNAV)	400	380	1000	1800	400	380	1400	2000
27	RNAV (LNAV)	450	430	1000	1800	450	430	1400	2000

Notes:

(1) Trial procedure, authorised Operators only.

CIRCLING		C			D		
R/W	Procedure	MDA QNH ft	MDH QFE ft	Vis m	MDA QNH ft	MDH QFE ft	Vis m
Not Authorised							

Notes:

TAKE-OFF		C	D
Runway	Facilities	m	m
09, 27	RCLL(H)+REDL(H)+Multi RVR (1)	125	150
09, 27	RCLL+REDL+Multi RVR	150	200
09, 27	RCLL+REDL	200	250
09, 27	RCL and/or REDL (2)	250	300
All	Nil (Day only)	500	500

Notes:

(1) Subject to Approval.

(2) For night operations, at least runway edge and end lights required.

JAR-OPS Landing Minima

BREMEN

The following Minima is for Public Transport aircraft and conforms to JAR-OPS1 regulations.

STRAIGHT-IN APPROACH		A				B			
R/W	Procedure	DA/ MDA QNH	DH/ MDH QFE	RVR	RVR	DA/ MDA QNH	DH/ MDH QFE	RVR	RVR
		ft	ft	m	m	ft	ft	m	m
09	ILS/DME	220	200	550	1000	220	200	550	1000
09	LOC/DME	480	460	1000	1500	480	460	1200	1500
09	VOR/DME	560	540	1000	1500	560	540	1200	1500
09	RNAV (GLS)(1)	320	300	900	1500	320	300	1000	1500
09	RNAV (L/VNAV)	420	400	900	1500	420	400	1000	1500
09	RNAV (LNAV)	450	430	900	1500	450	430	1000	1500
27	ILS/DME	220	200	550	1000	220	200	550	1000
27	LOC/DME	480	460	1000	1500	480	460	1200	1500
27	VOR/DME	490	470	1000	1500	490	470	1200	1500
27	RNAV (GLS)(1)	320	300	900	1500	320	300	1000	1500
27	RNAV (L/VNAV)	400	380	900	1500	400	380	1000	1500
27	RNAV (LNAV)	450	430	900	1500	450	430	1000	1500

Notes:

(1) Trial procedure, authorised Operators only.

CIRCLING		A			B		
R/W	Procedure	MDA QNH	MDH QFE	Vis	MDA QNH	MDH QFE	Vis
		ft	ft	m	ft	ft	m
Not Authorised							

Notes:

TAKE-OFF		A	B
Runway	Facilities	m	m
09, 27	RCLL(H)+REDL(H)+Multi RVR (1)	125	125
09, 27	RCLL+REDL+Multi RVR	150	150
09, 27	RCLL+REDL	200	200
09, 27	RCL and/or REDL (2)	250	250
All	Nil (Day only)	500	500

Notes:

(1) Subject to Approval.

(2) For night operations, at least runway edge and end lights required.

JAR-OPS Landing Minima

BREMEN

The following Minima is for Public Transport aircraft and conforms to JAR-OPS1 regulations.

CAT II

Special aircrew and aircraft certification required.

Runways	C				D			
	DA	DH	RA	RVR	DA	DH	RA	RVR
	QNH	QFE			QNH	QFE		
	ft	ft	ft	m	ft	ft	ft	m
09 (1)	113	100	99	300	113	100	99	350
27 (1)	114	100	98	300	114	100	98	350

Notes:

1) Cat D RVR may be reduced to 300m when conducting autoland.

Runways	A				B			
	DA	DH	RA	RVR	DA	DH	RA	RVR
	QNH	QFE			QNH	QFE		
	ft	ft	ft	m	ft	ft	ft	m
09	113	100	99	300	113	100	99	300
27	114	100	98	300	114	100	98	300

Notes: